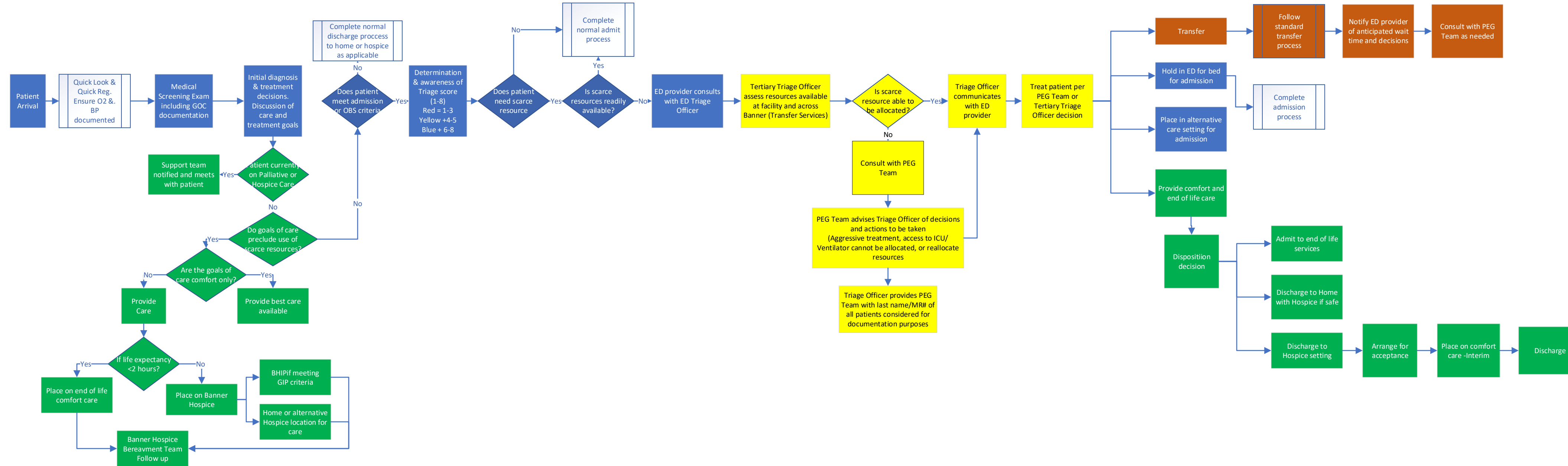
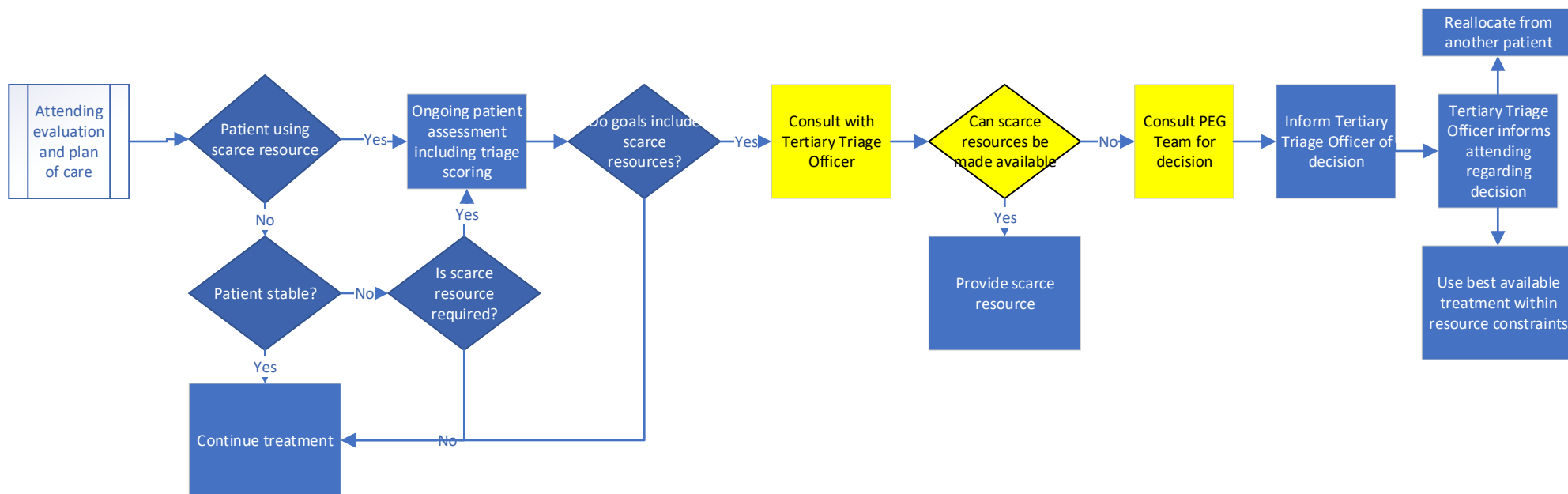


## High Level ED Crisis Standards of Care Process Flow



## Inpatient High Level Inpatient Crisis of Care Standards Process Flow



BHS Transfer Service Bed Board Status

Green = Staffed & available beds (bed assigned within 10 min)

Yellow = Limited ability to place (plan within 20 min, bed assigned within 2 hours)

Red = Significant challenge to place (no ETA on bed availability, waitlist)

Add ventilators to Bed Board Status

Summary Table 1: Multi-principle Strategy for Determining Triage Priority Score for an Individual Patient  
Based on Pittsburgh, California and Maryland Frameworks

	0 POINTS	1 POINT	2 POINTS	3 POINTS	4 POINTS
SOFA score (Table 1-A)		ADULT SOFA SCORE (<6)	ADULT SOFA SCORE (6-8)	ADULT SOFA SCORE (9-11)	ADULT SOFA SCORE (≥12)
Or PELOD-2 score (Table 1-P)		OR PEDIATRIC PELOD-2 SCORE <12	OR PEDIATRIC PELOD-2 SCORE 12-13	OR PEDIATRIC PELOD-2 SCORE 14-16	OR PEDIATRIC PELOD-2 SCORE ≥ 17
-----PLUS-----					
	ADD 0 POINTS		ADD 2 POINTS		ADD 4 POINTS
Additional considerations	Expected to live more than 5 years if patient survives the acute illness		Death expected within 5 years despite successful treatment of acute illness		Death expected within 1 year despite successful treatment of acute illness

Reference Table 1-A: Sequential Organ Failure Assessment (SOFA) Score

TABLE 1					
Sequential Organ Failure Assessment (SOFA) Score <sup>1-2</sup>					
Organ System	0	1	2	3	4
Respiratory PaO2/FiO2, mmHg	>400	≤400	≤300	≤200	≤100
Coagulation Platelets x10 <sup>3</sup> /μL	>150	≤150	≤100	≤50	≤20
Liver Bilirubin, mg/dL	<1.2	1.2-1.9	2.0-5.9	6.0-11.9	>12.0
Cardiovascular, hypotension	No hypo- tension	MAP <70 mm Hg	dopamine≤5 or dobutamine any dose	dopamine>5 epinephrine≤0.1 norepinephrine≤0.1	dopamine>15 epinephrine>0.1 norepinephrine>0.1
CNS, Glasgow Coma Score	15	13-14	10-12	6-9	<6
Renal, Creatinine mg/dL urine output mL/d	<1.2	1.2-1.9	2.0-3.4	3.5-4.9 or urine <500 mL/d	>5.0 or urine<200 mL/d

Summary Table 2: Determining Triage Color Group for an Individual Patient

Triage Color Group	Triage Priority Score from Summary Table 1
RED HIGHEST PRIORITY FOR CRITICAL CARE RESOURCES	1-3
YELLOW INTERMEDIATE PRIORITY FOR CRITICAL CARE RESOURCES	4-5
BLUE LOWEST PRIORITY FOR CRITICAL CARE RESOURCES	6-8